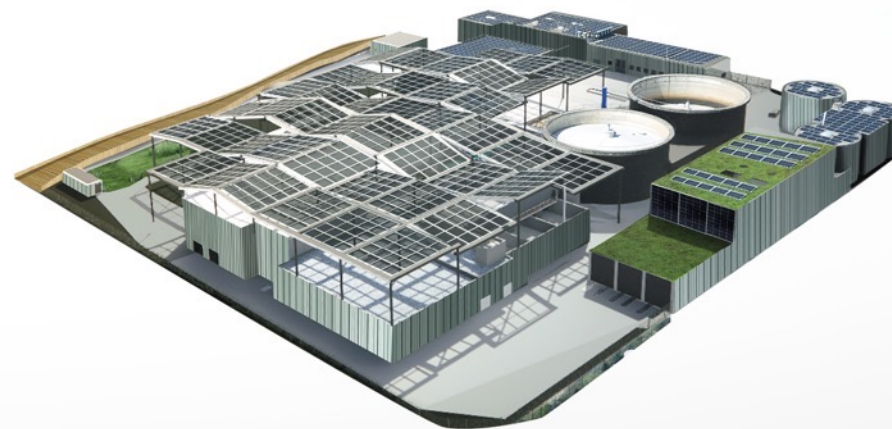
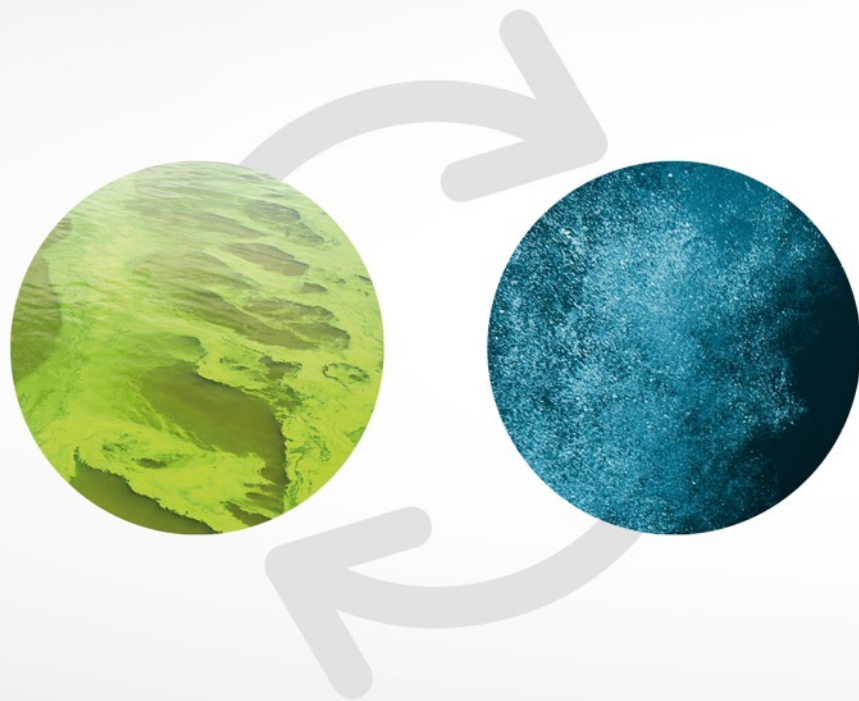




Welcome

INNOVATION IN ITS GLOBAL APPROACH



THE "JEUNES-RIVES"

AN OVERALL QUALITY VISION,
COHERENT AND OPEN TO THE PUBLIC



REDUCTION OF GREENHOUSE GAS EFFECTS (CO₂)

UPDATING OF REDUCTION TARGETS -
FEDERAL OFFICE FOR THE ENVIRONMENT

KYOTO PROTOCOL

PARIS AGREEMENT



2012

1ST CO₂ LAW

-8%



2020

2ND CO₂ LAW

-20%



2030

3RD CO₂ LAW

-50%



2050

SWISS GOVERNMENT
DECISION
29TH AUGUST 2019

SWISS GOVERNMENT
COUNTER-PROPOSAL
TO THE GLACIERS
INITIATIVE 2ND SEPT 2020

ZERO
NET EMISSIONS


ENERGY

ENERGY SELF SUFFICIENCY

2021



1.8GWh
ELECTRIC-
POWER
GENERATION


6%
RETURNED TO
POWER
NETWORK 




25
HOUSEHOLD
EQUIVALENCE



2GWh
HEAT
PRODUCTION

40%
RETURNED TO
DISTRICT
HEATING 




45
HOUSEHOLD
EQUIVALENCE

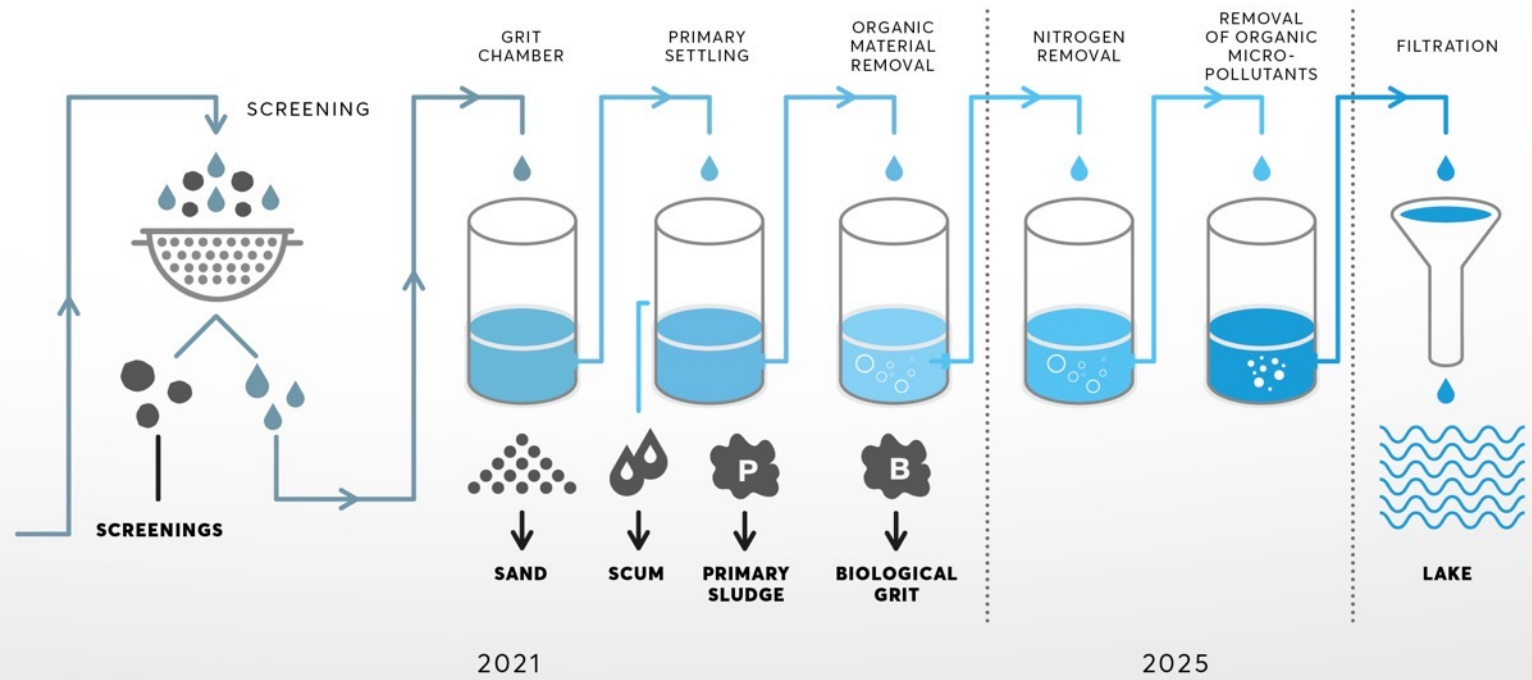
ENVIRONMENT

TREATMENT OF MICROPOLLUTANTS,
NITROGEN AND CARBON NEUTRALITY

1 SEWAGE SYSTEM



2 WASTEWATER TREATMENT PLANT



ENERGY

ENERGY SELF SUFFICIENCY

2025



2.3GWh
ELECTRIC-
POWER
GENERATION



**SELF-
SUFFICIENCY**



2GWh
HEAT
PRODUCTION

40%
RETURNED TO
DISTRICT
HEATING **v**

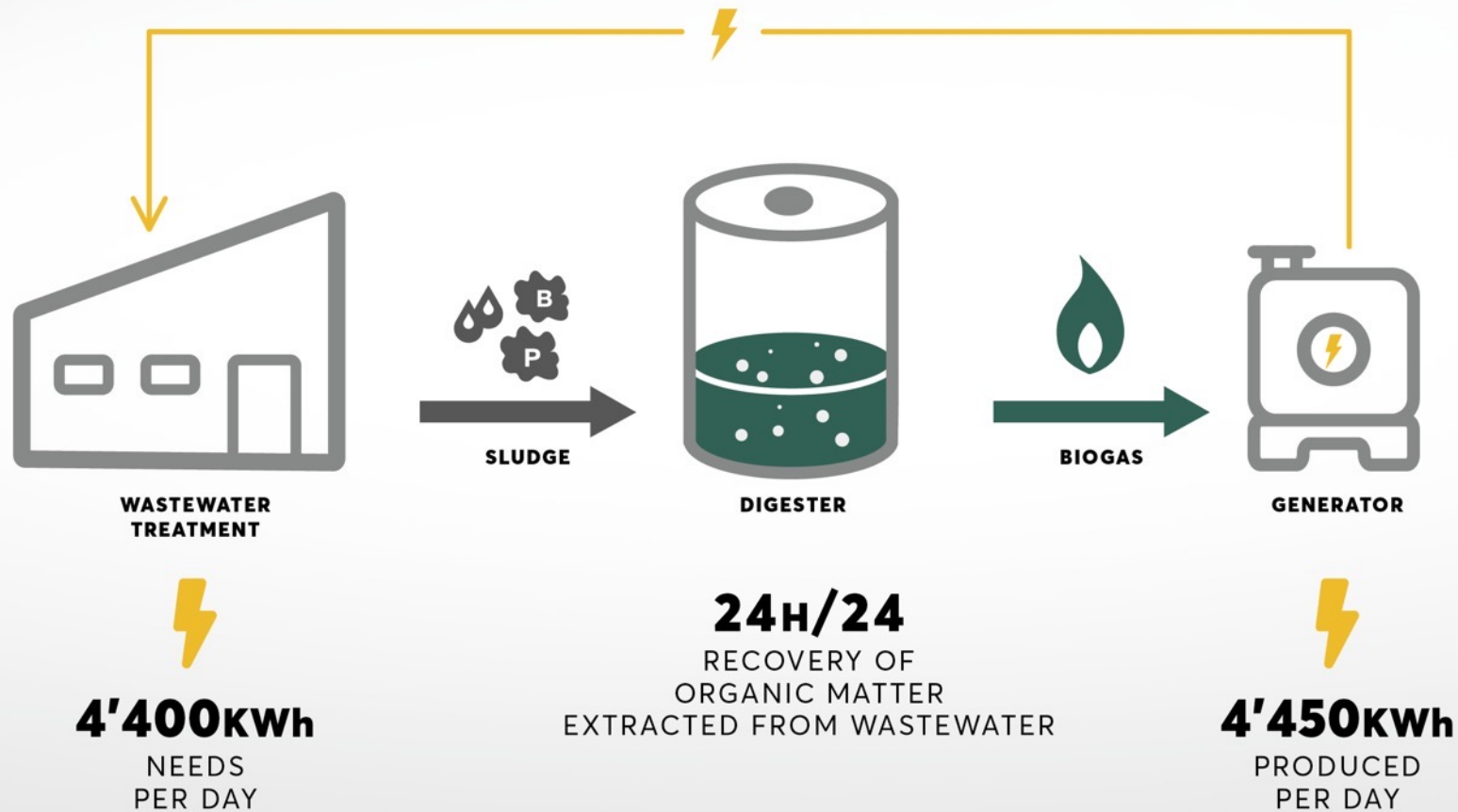


45
HOUSEHOLD
EQUIVALENCE

**+HEAT
PUMP**

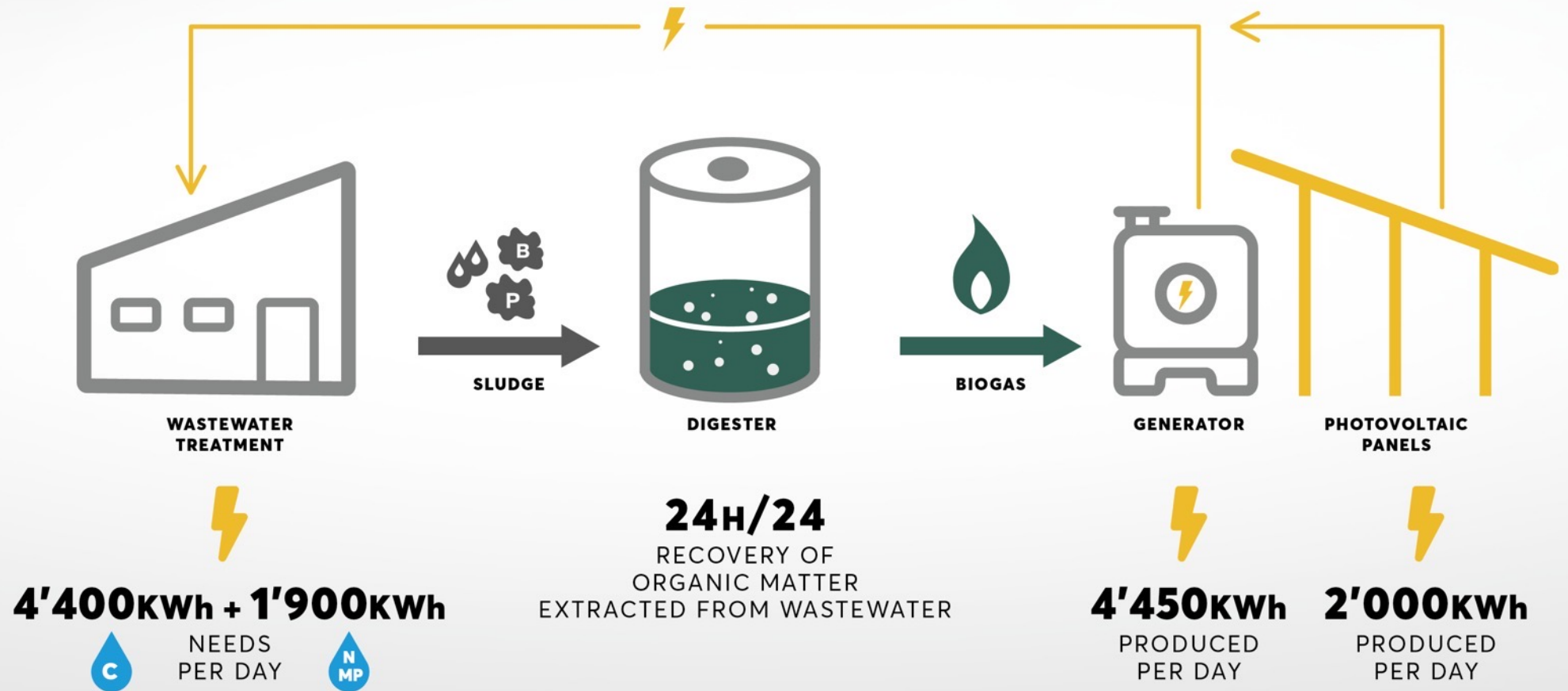
SELF-SUFFICIENCY OPERATION

ENERGY CONSUMPTION IN 2021

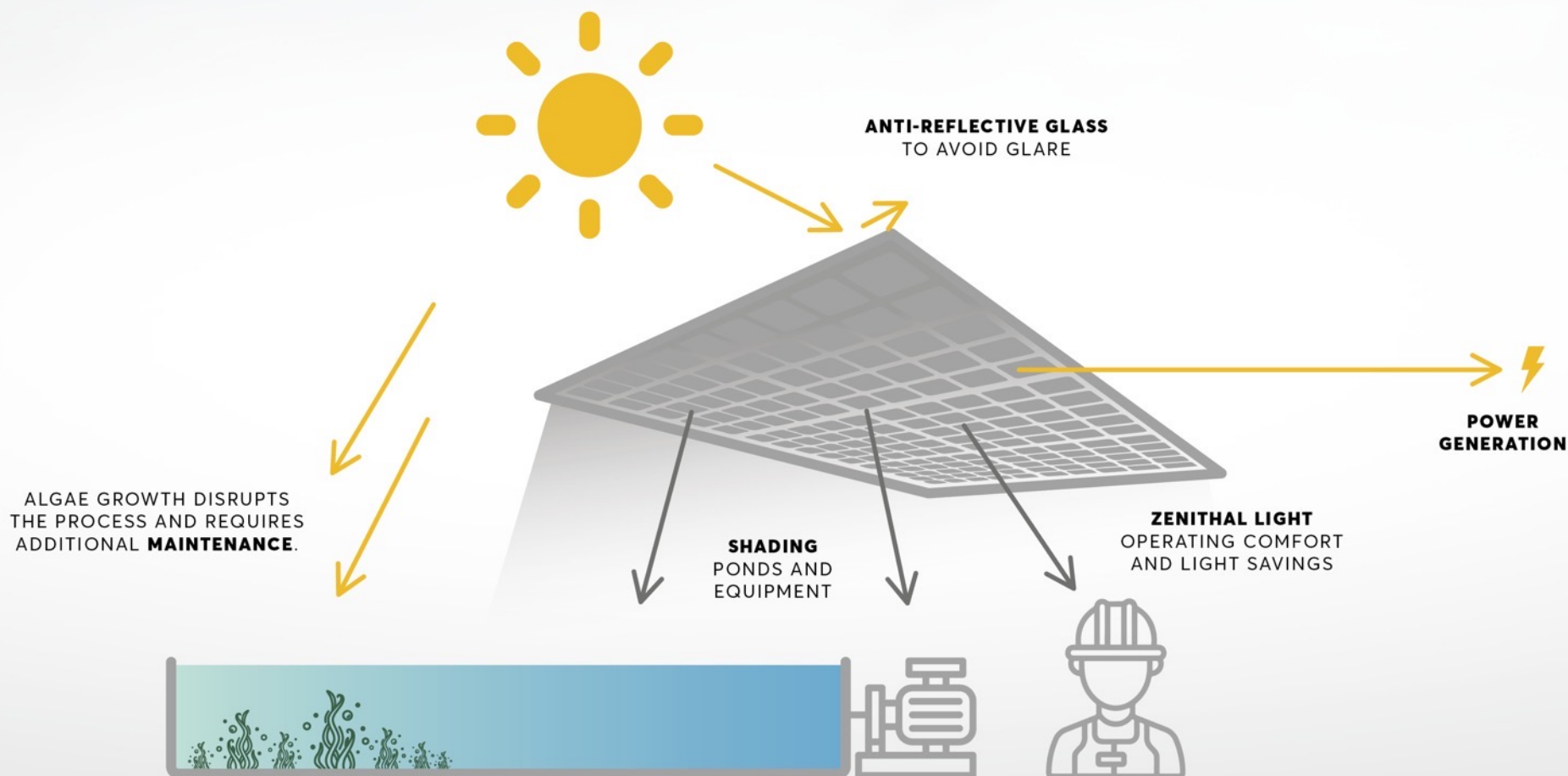


SELF-SUFFICIENCY OPERATION

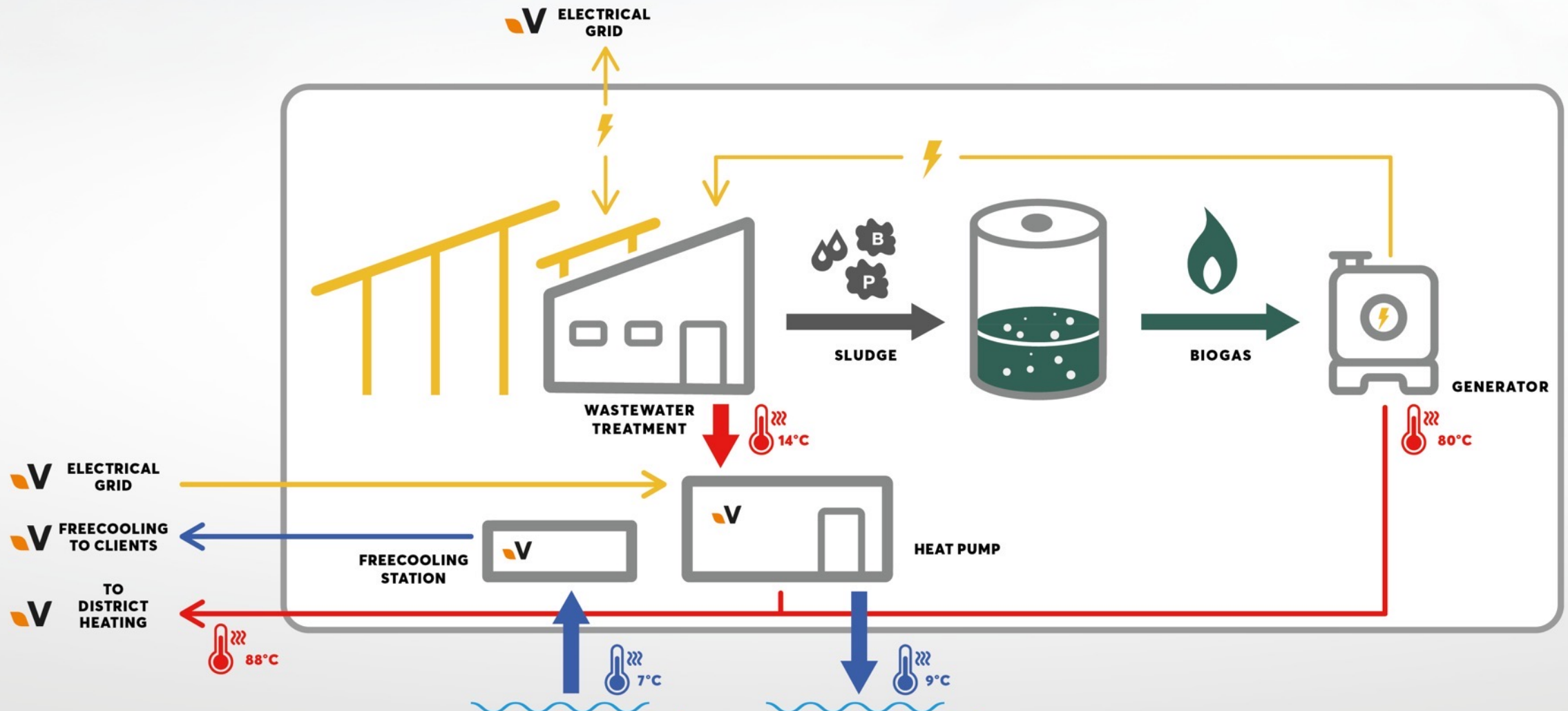
ENERGY CONSUMPTION IN 2025



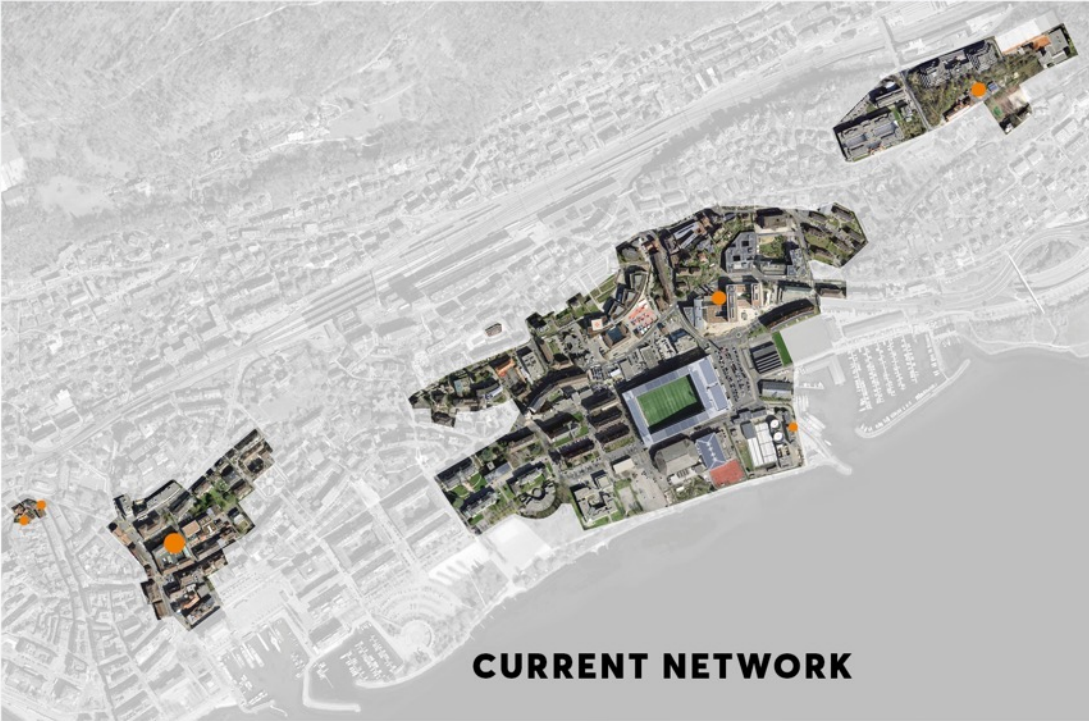
PHOTOVOLTAICS AND PROTECTION



A MULTI-ENERGY WWTP



DISTRICT HEATING




24%
RENEWABLE
ENERGY


34GWh
PER YEAR


1'500
HOUSEHOLD
EQUIVALENCE


50%
RENEWABLE
ENERGY

CO₂
40%
ECONOMY IN
EQUIVALENTS
PER YEAR


44GWh
PER YEAR

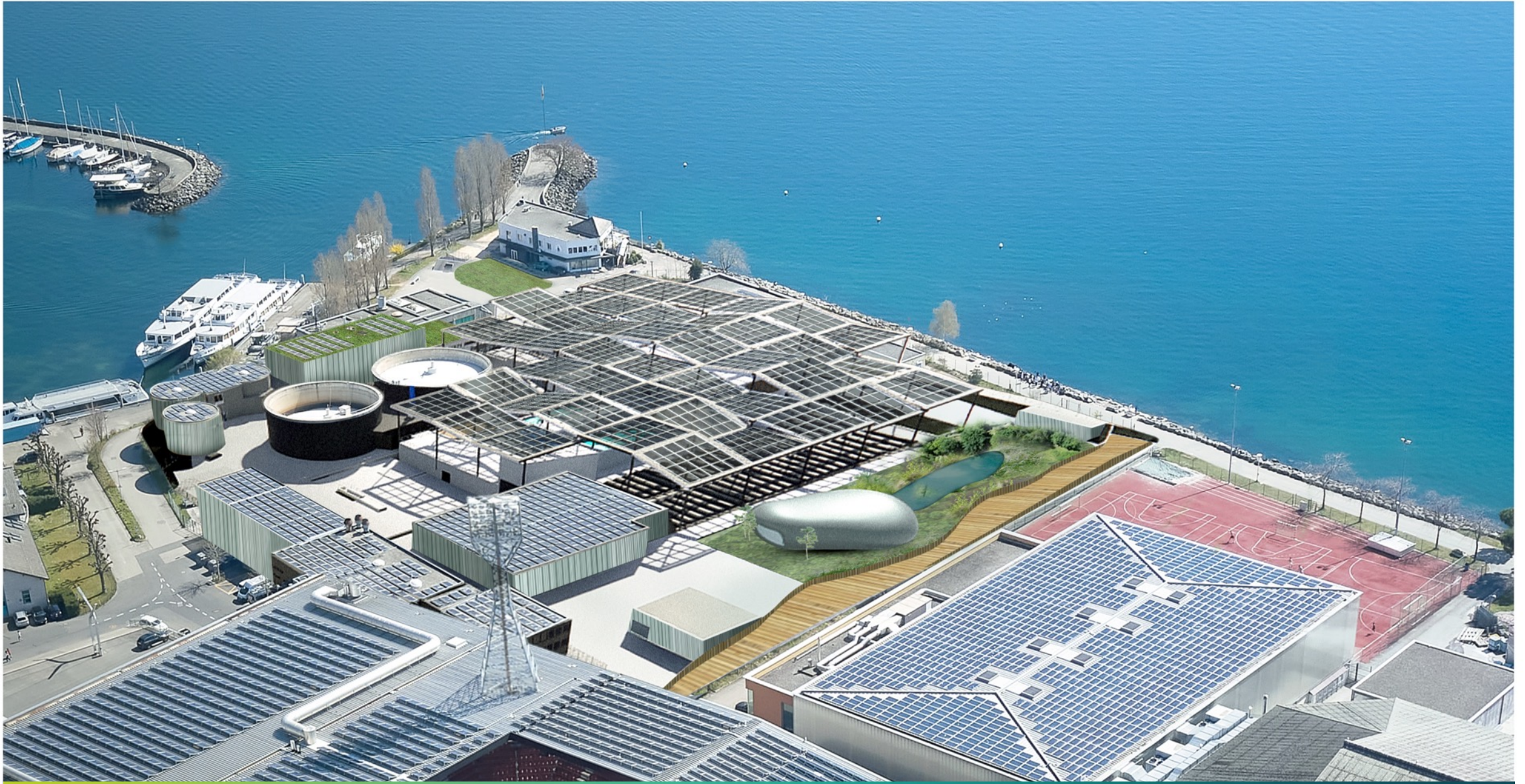

2'000
HOUSEHOLD
EQUIVALENCE

«STEP 2025»
ARCHITECTURE

AN IDYLIC SETTING

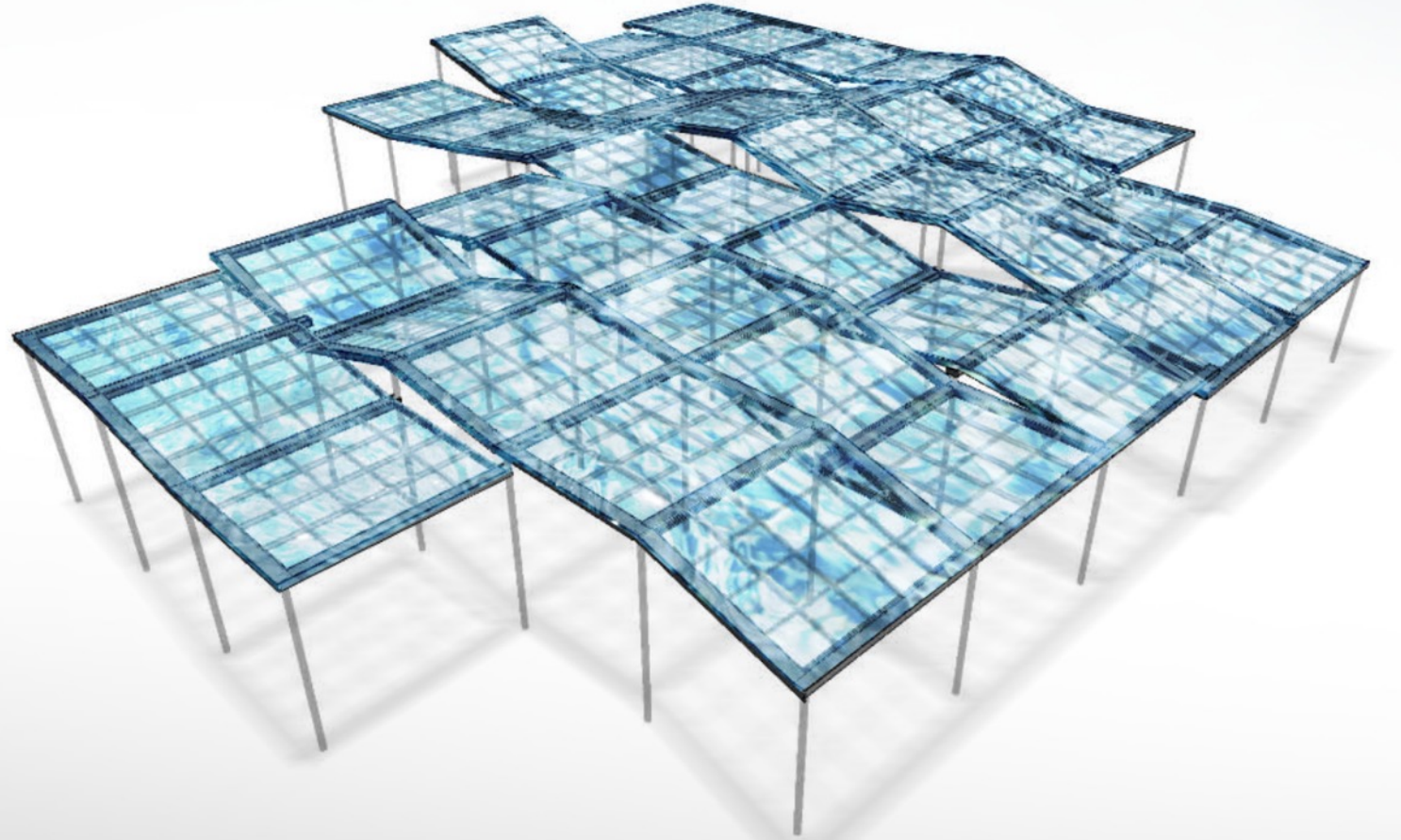
TOES IN WATER

Located on the shore of Lake Neuchâtel,
so typical with its walks and
its beautiful pebble beach.



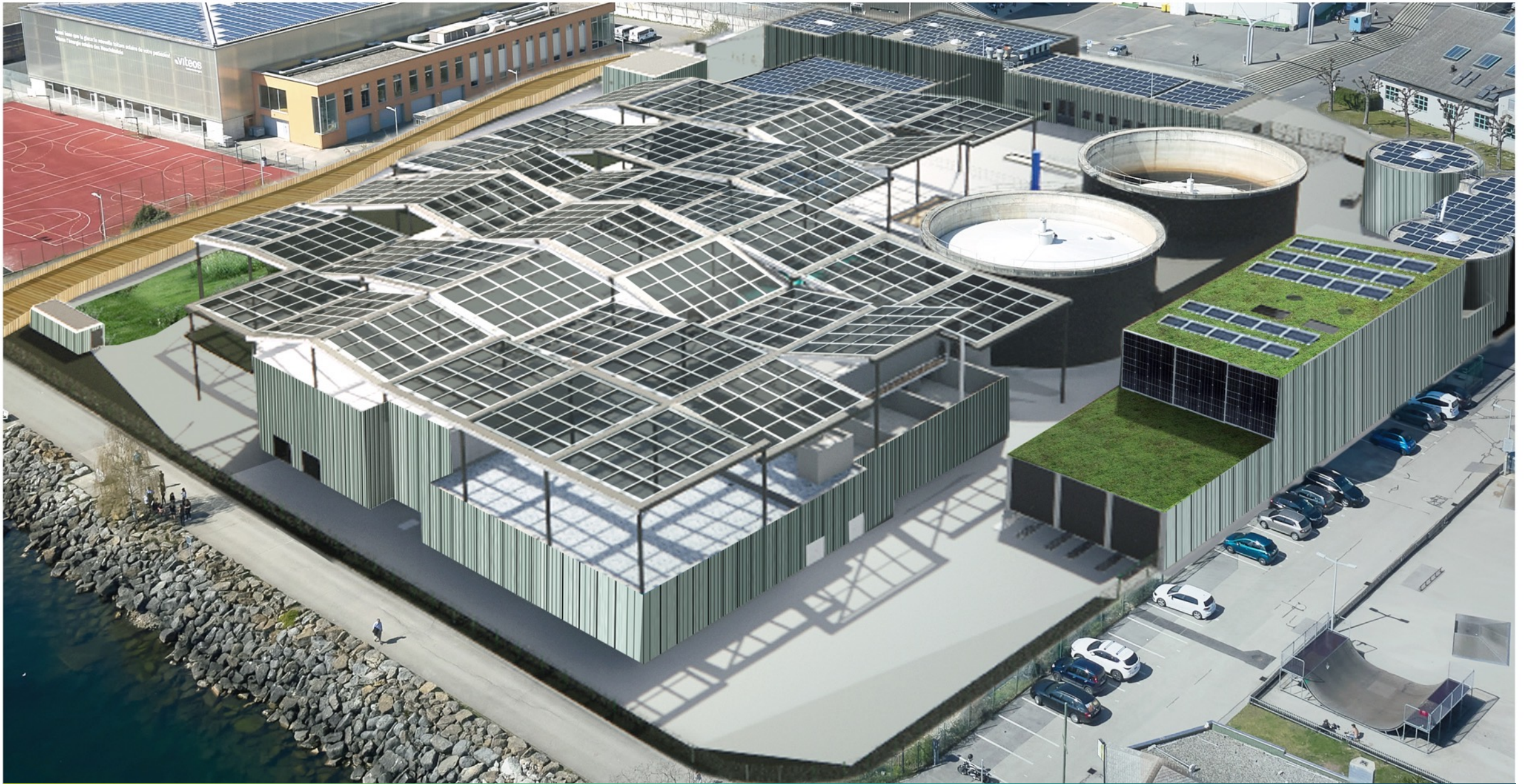
THE WAVE

A FUNCTIONAL ELEMENT NECESSARY FOR THE PROJECT



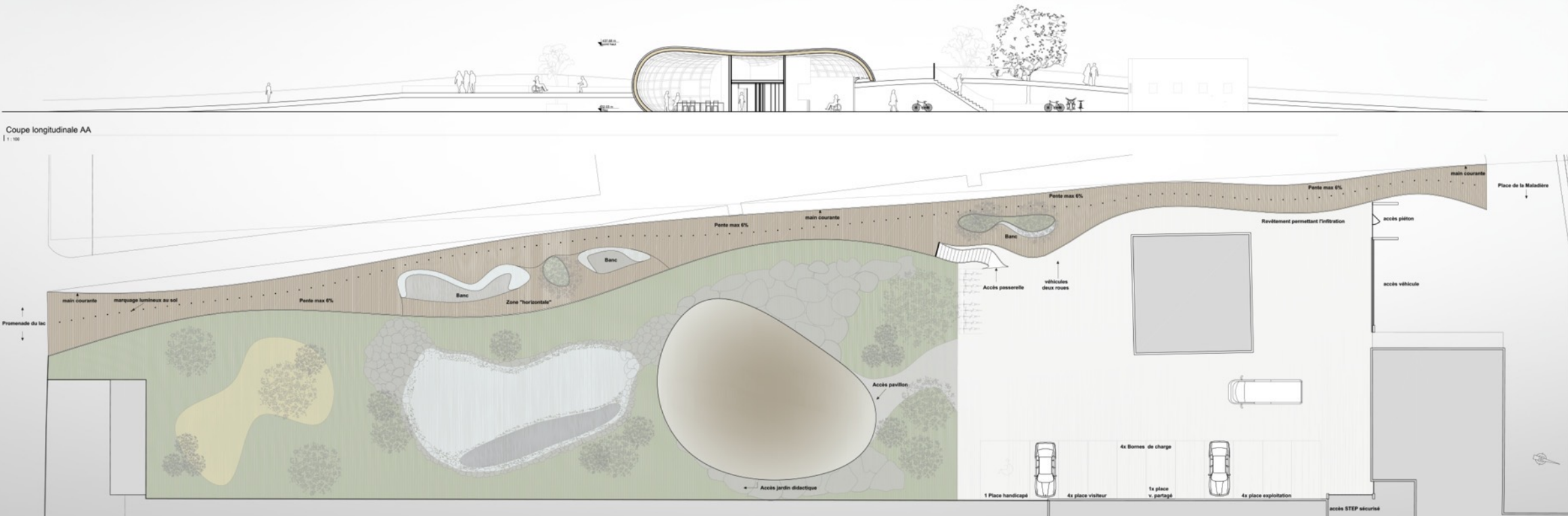
Integrate,
protect and capture





THE BRIDGE

A NATURAL LINK BETWEEN THE CITY AND THE LAKE



Coupe longitudinale AA

1 : 100



THE PEBBLE

THE HISTORY AND IDENTITY OF OUR REGION

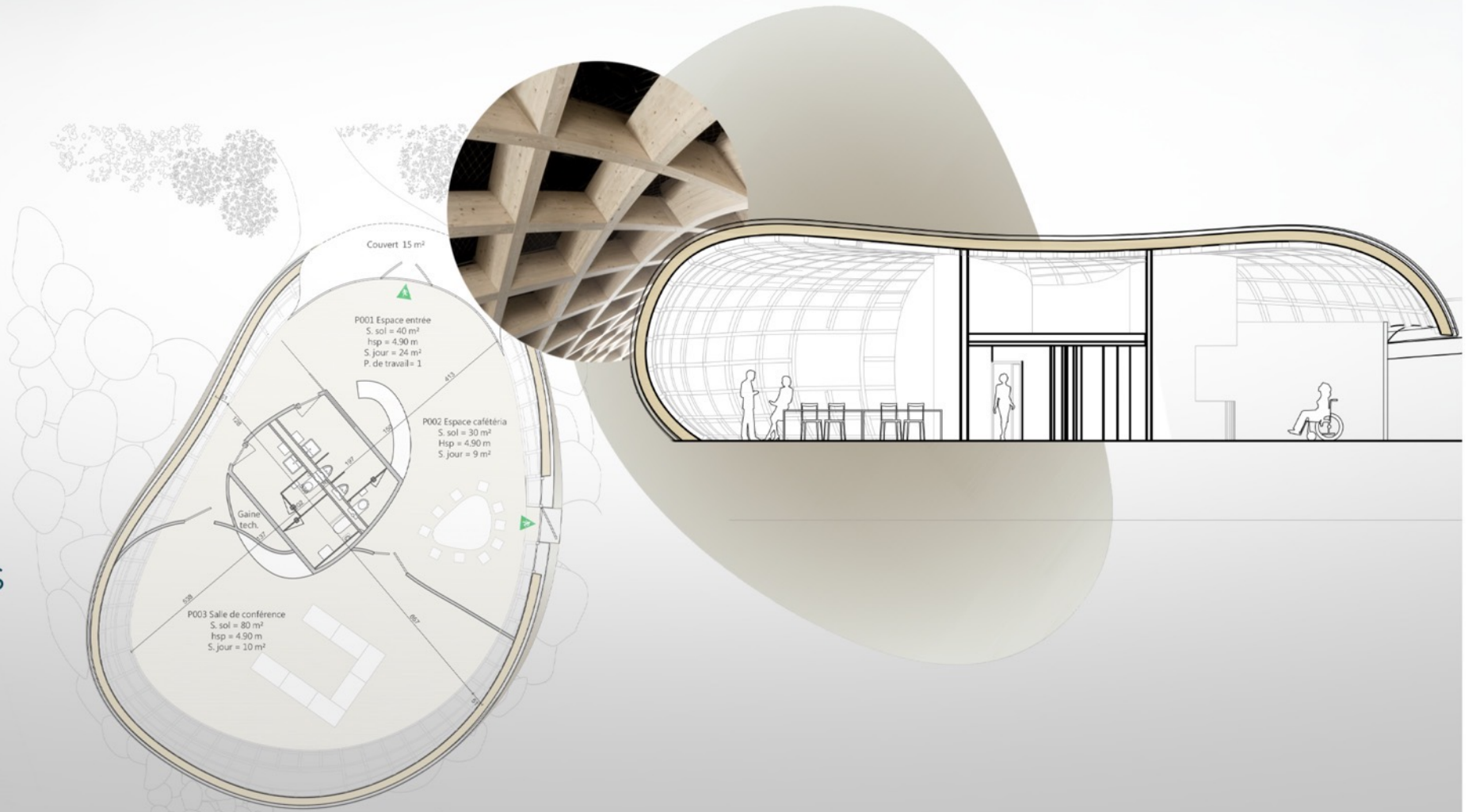
A pavilion
with a positive
energy balance



THE PEBBLE

THE HISTORY AND IDENTITY OF OUR REGION

A mix
of technique
and lightness



CONCLUSION

COLLECTIVE INTELLIGENCE SUPPORTING THE COMMUNITY



THANK YOU
for your attention

